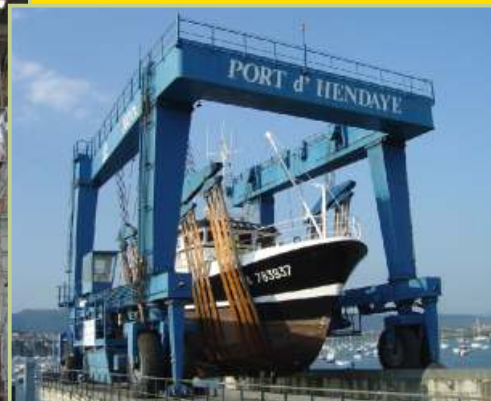


· GH ·

CRANES & COMPONENTS



LIFTING SYSTEMS FOR SHIPYARDS



THE INDUSTRIAL UNITS CAN BE OPENED AND CLOSED ACCORDING TO NEEDS

MOBILE INDUSTRIAL UNIT

- **DESCRIPTION:**
Mobile building, driven by electric motor-gearboxes, on tracks.
- **APPLICATIONS:**
Mobile industrial units are useful in large working areas where different production processes require working outdoors or under cover (wind, rain etc...).

The industrial unit rests on a set of motorized bogies. It is equipped with guide rollers for safety when on the move.

MOVEMENT WITH BOGIES





LONG TRAVEL WITH BOGIES





■ HANDLING OF BEAMS



■ HANDLING OF METAL SHEETS



OUTDOORS MATERIAL HANDLING

● **DESCRIPTION:**

Gantries, semigantries or EOT cranes with a crab (normally Open winch) to handle as sheets or profiles, with a spreader equipped with electromagnets.

● **APPLICATION:**

Loading and unloading of material stocked outdoors. For that, a system with a spreader and electromagnets is needed. The magnets' size and weight will vary depending on the customer's needs.



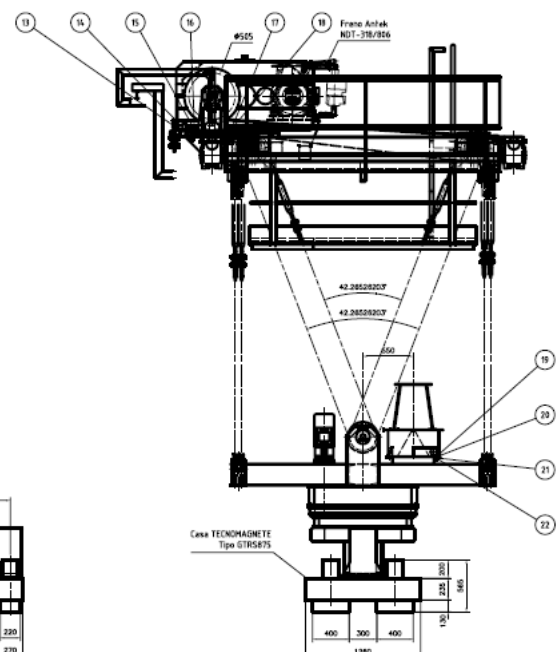
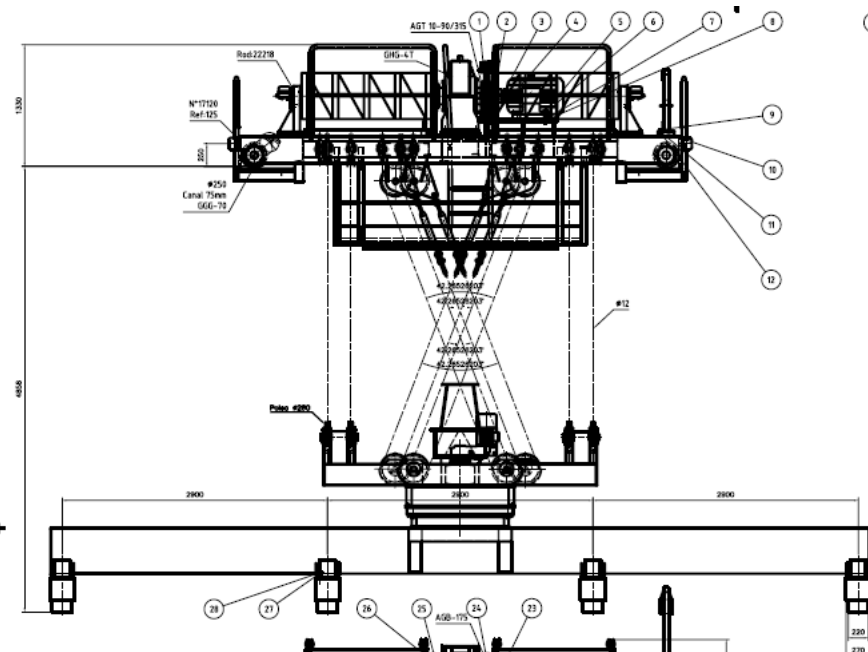


■ OTHER USES FOR GANTRIES ON TYRES

■ SEVERAL APPLICATION IN SHIPYARDS



■ SYSTEM WITH 1 6/8 WIRE ROPE FALLS TO AVOID LOAD SWING AND OF THE SPREADER.





INDOORS HANDLING

- **DESCRIPTION:**
To handle materials.
- **APPLICATION:**
Manipulation indoors, in warehouses, supply for cutting tables, assembly, etc.



CRANE WITH ROTATORY CRAB



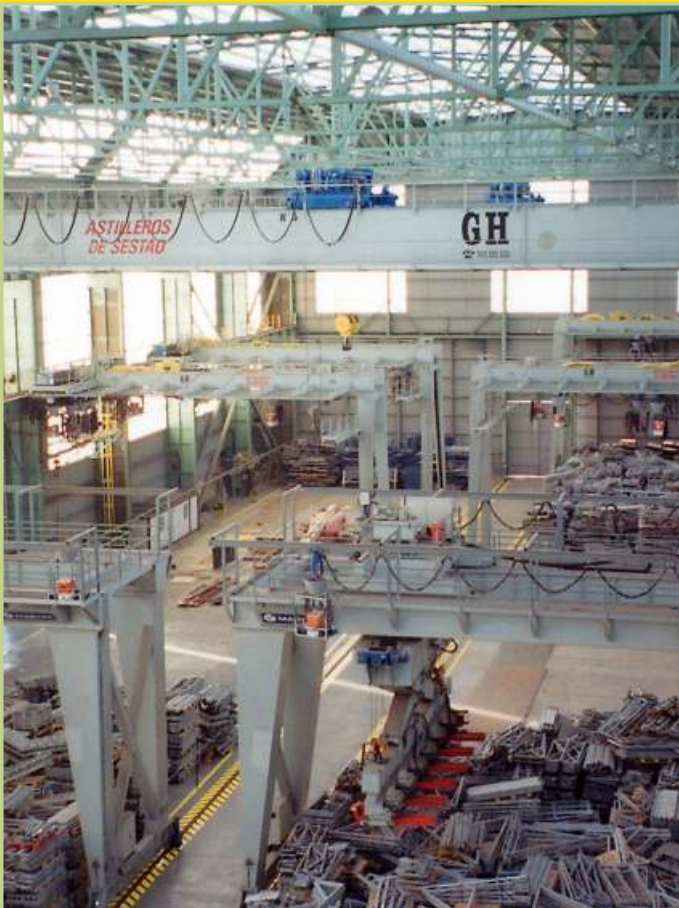
SHEET AND BEAMS WAREHOUSE





■ BOAT INNER SECTION ASSEMBLY





CRANES FOR WELDING PROCESSES

- **DESCRIPTION:**
Cranes carrying welding equipment.
- **APPLICATION:**
Make welding processes easier, improving access, time and safety during the operations.





■ SYSTEM FOR THE EXTRACTION OF WELDING GASES



■ POWER SUPPLY FOR THE EDT CRANE AND WELDING EQUIPMENT



■ SUPPORT STRUCTURE FOR WELDING EQUIPMENT



■ WELDING EQUIPMENT INSTALLED IN THE CRANE





OUTDOOR ASSEMBLY

- **DESCRIPTION:**
For the handling of sections and assembly.
- **APPLICATION:**
Carrying out assemblies outside, processes of assembly of sections, finishing and flipping sets.





■ LAUNCHING

■ FLIPPING AND ASSEMBLY OF SETS



■ OUTDOOR GANTRY CRANES WITH TWO HOOKS TO HANDLE BIG PIECES





DRY-DOCK ON SLIPWAYS

- **DESCRIPTION:**
For running vessels aground.
- **APPLICATION:**
It can run big vessels (up to 600 tn)
aground.



THE PULLING IS MADE WITH A HIGH POWER WINCH







RUNNING VESSELS AGROUND WITH A JIB

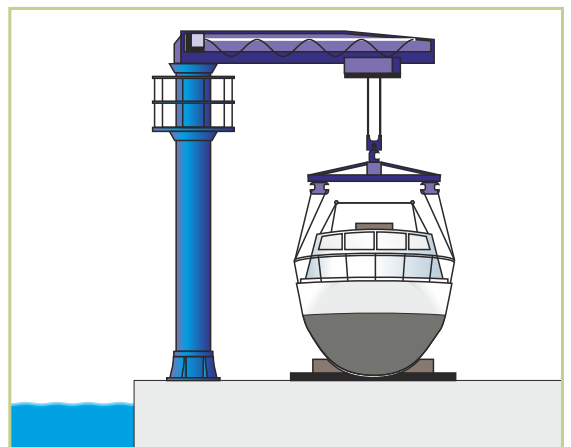
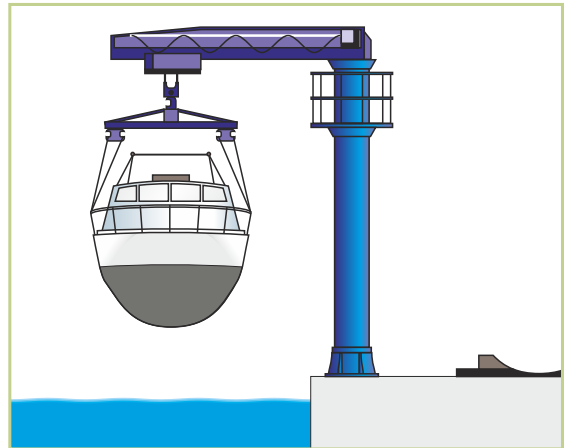
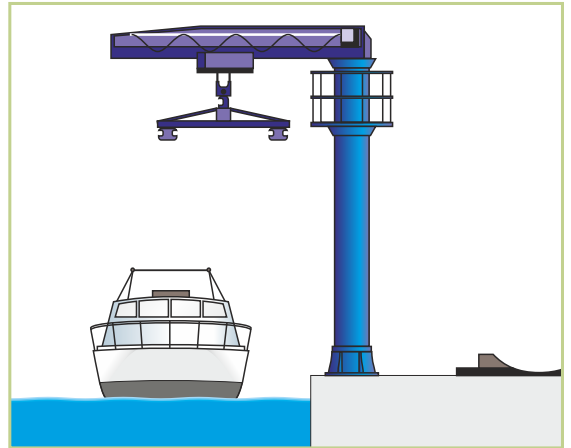
DESCRIPTION:

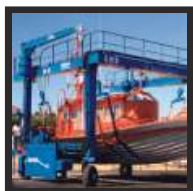
The standardization of mechanisms using a simple, modular construction allows us to offer a wide range of jib cranes with rotatory booms, with a capability of up to 20 t, with a maximum arm length of 7 m.

APPLICATION:

- For small-size vessels.







RUNNING VESSELS AGROUND WITH MOBILE BOAT HOISTS

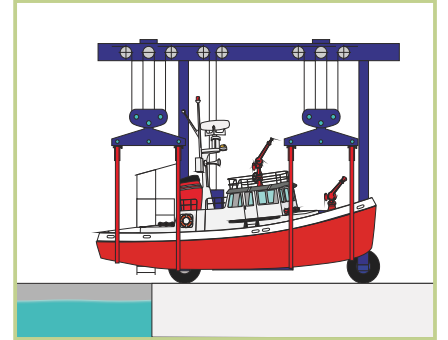
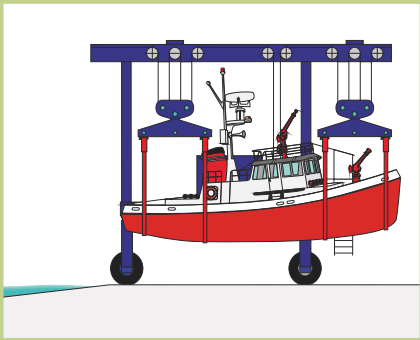
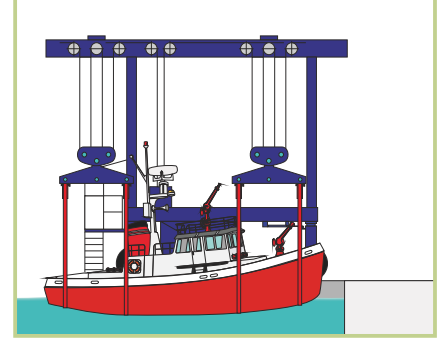
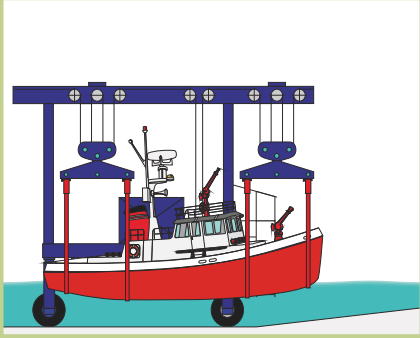
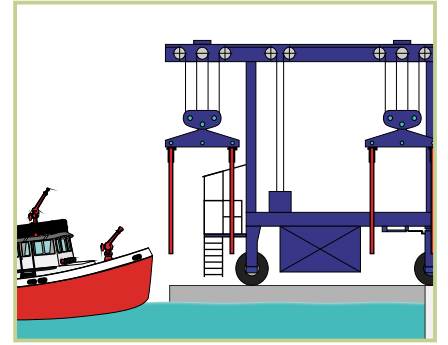
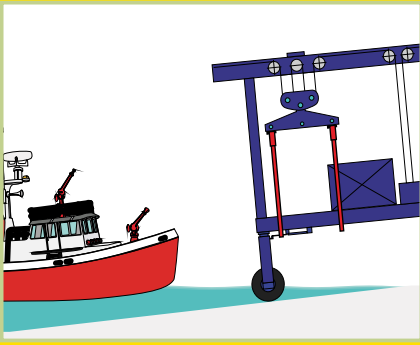
- **DESCRIPTION:**

Wide range of self-propelled gantries, with capabilities of up to 400 t. All of them are renowned because they are robust and easy to operate, service and manoeuvre.

- **APPLICATION:**

For all capacities of the cranes, all the components of the system are mounted in a perfect array, fitting to all kinds of vessels.





■ RUNNING VESSELS AGROUND WITH SUBMERSIBLE MOBILE BOAT HOIST

■ RUNNING VESSELS AGROUND WITH GANTRY IN PIT

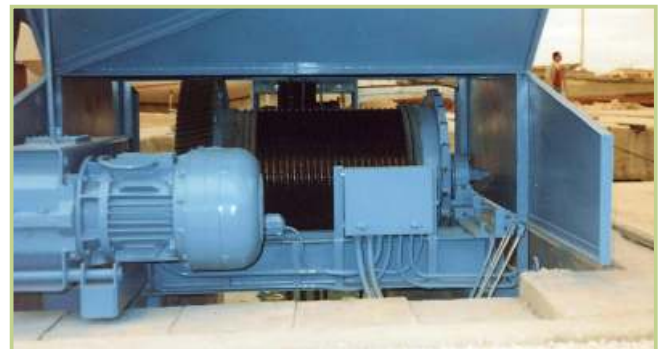
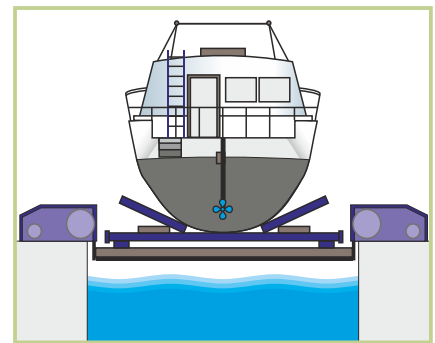
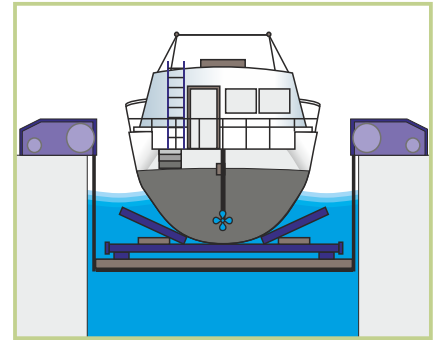
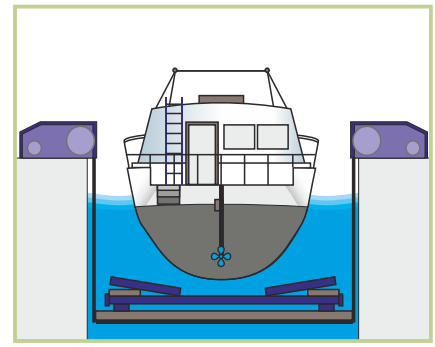


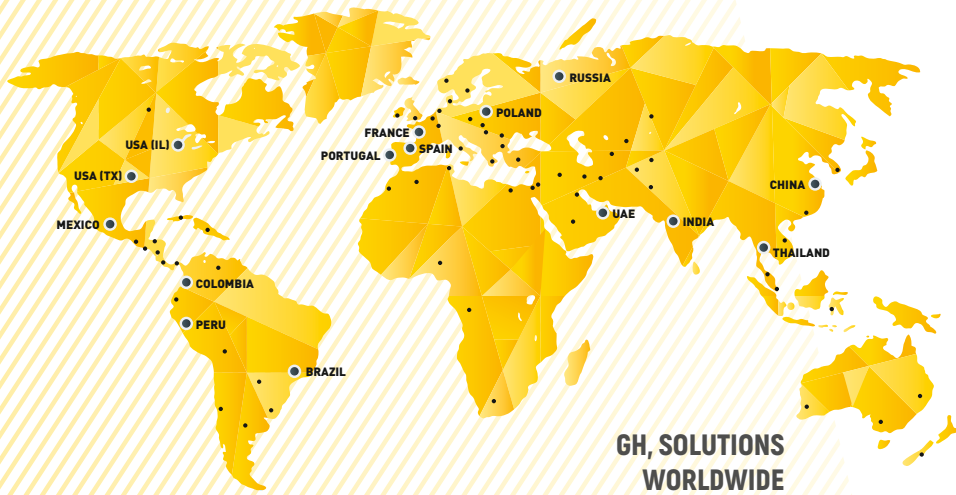


RUNNING VESSELS AGROUND WITH SYNCHROLIFT

- **DESCRIPTION:**
Running vessels aground.
- **USES:**
Possibility of running large vessels aground.







GH, SOLUTIONS
WORLDWIDE

Presence in
+73 COUNTRIES
ON 5 CONTINENTS

+ 112.000
sold cranes

+ 750

IN THE
TOP 5 CRANE
MANUFACTURERS
WORLDWIDE

GH, Spain central offices

-GH-

www.ghcranes.com



Beasain
CENTRAL OFFICES
T: +34 943 805 660
ghcranes@ghcranes.com



Olaberría
T: +34 902 205 100
globalservice@ghcranes.com



Alsasua
T: +34 948 467 625



Bakaiku
T: +34 948 562 611



Jaén
T: +34 902 205 100

GH, subsidiaries in the world



Brazil Cabreúva
GH DO BRASIL IND. E COM. LTDA.
T: +52 44 22 77 55 03
ghdobrasil@ghdobrasil.com.br



China Shanghai
GH (SHANGHAI)
LIFTING EQUIPMENT CO., LTD.
T: +86 21 5988 7676
ghchina@ghsa.com



Colombia Bogotá
GH COLOMBIA SAS
T: +57 1 750 4427
yezpeleta@ghsa.com



France Couëron
GH FRANCE SA
T: +33(0) 240 861 212
ghfrance@ghsa.com



India Pune
GH CRANES INDIA PVT. LTD.
T: +91 89561 35444
ghindia@ghsa.com



Mexico Querétaro
GRÚAS GH MEXICO SA DE CV
T: +52 44 22 77 55 03
+52 44 22 77 50 74
ghmexico@ghsa.com.mx



Peru Lima
GH PERÚ S.A.C.
T: +51 987816231
gferradas@ghsa.com



Poland Kłobuck
GH CRANES SP. Z O.O.
T: +48 34 359 73 17
intertech@ghsa.pl



Portugal São Mamede do Coronado
GH PORTUGAL
T: +351 229 821 688
geral@ghsa.com



Russia Moscow
GH RUSSIA
T: +7 (495) 745 69 26
ghrussia@ghsa.com



Thailand Chonburi
LGH Cranes
T: +66 (0) 2327 9399
M: +66 (0) 8 4660 1365
ghthailand@ghsa.com



UAE Dubai
GH Cranes Arabia FZCO
Office no. 517, 5th Floor, Jafza
Building 16, Jebel Ali Free Zone.
P.O Box Number - 263594
T: +971 4 8810773
gharabia@ghcranes.com



USA Illinois
GH CRANES USA
T: (815) 277 5328
ghcranesusa@ghsa.com



USA Texas
F&G CRANES
T: (972) 563 8333
info@fg-ind.com

**Lifting
your
world.**